



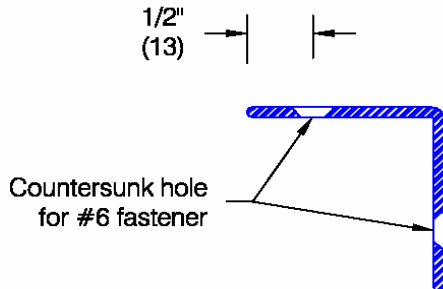
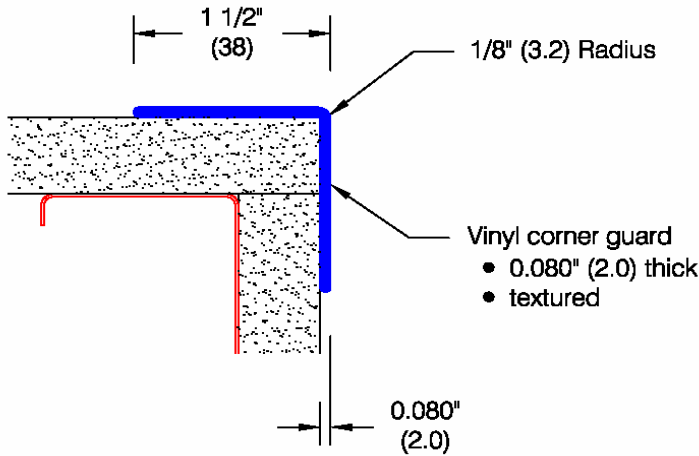
AMERICAN FLOOR PRODUCTS COMPANY, INC.

AFCO-USA

P.O. BOX 7055 • Gaithersburg, Maryland 20898 -7055 • 301-987-0490 • Fax 301-987-0422
email: sales@afco-usa.com • Web Site: www.afco-usa.com

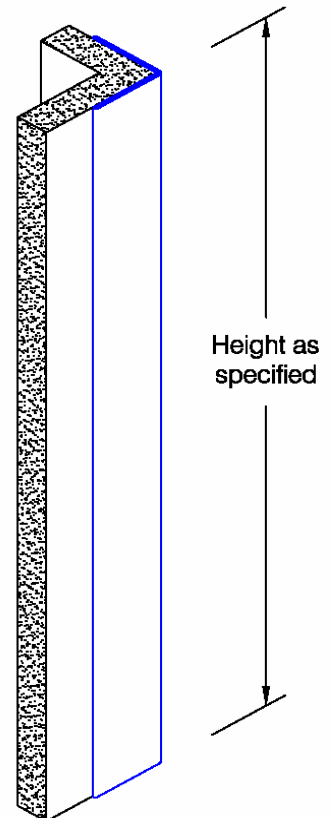
CUSTOMER P.O. #

ELECTRA® 1-1/2" Corner Guard (CG-2144)



Optional Drilling:

- Standard spacing: 1" (25) from each end and spaced evenly not to exceed 36" (914) oc



ELECTRA® 1-1/2" Corner Guard (CG-2144)

Mounting	Application	Shock absorbing	Construction	Materials	Fire rating
Surface	High abuse	25.4 ft.lbs/in. ASTM D-256	New and renovation	Vinyl	Class A

Testing in accordance with NFPA 255 (ASTM E 84):

Class A

Flame Spread Index: 5

Smoke Developed Index: 185

<p>Features:</p> <ul style="list-style-type: none"> • Class A fire rating • Stock lengths: <ul style="list-style-type: none"> 4'-0" (1219 mm) 8'-0" (2438 mm) 12'-0" (3658 mm) 	<p>Finishes:</p> <ul style="list-style-type: none"> • Manufacturer's standard colors • Custom colors available 	<p>Mounting Options:</p> <ul style="list-style-type: none"> • Adhesive: (Undrilled) AD-1330 adhesive supplied separately • Drilled: Countersunk holes for ABSS-134 #6 x 1-1/2" (38 mm) oval head sheet metal screw supplied separately as required • Taped: AD-1365 double sided adhesive tape factory applied to corner guard
---	---	--

Corner Guard designs conform to OSHA, ANSI Life Safety, NFPA, BOCA, UBC, BOMA, ICBO, SBCCI, American Disabilities Act Accessibility Guidelines and all National Building /Code requirements.

	ITEMS	QUANTITY
JOB NAME:		
JOB NUMBER:	Guard Length: 4', 8', 12'	
CONTRACTOR:	Color:	
ARCHITECT:	Adhesive: AD-1330	
DEALER NAME:	Drilled:	
SIGNATURE: _____ Date: _____	Taped: AD-1365	