



AMERICAN FLOOR PRODUCTS COMPANY, INC.

AFCO-USA

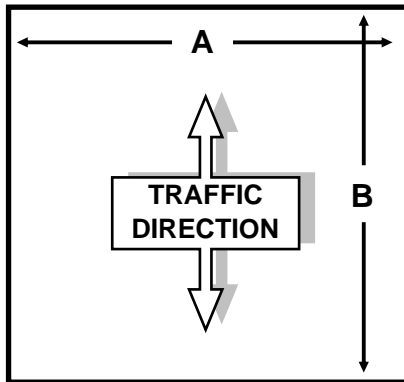
P.O. BOX 7055 • Gaithersburg, Maryland 20898 -7055 • 301-987-0490 • Fax 301-987-0422

email: sales@afco-usa.com • Web Site: www.afco-usa.com

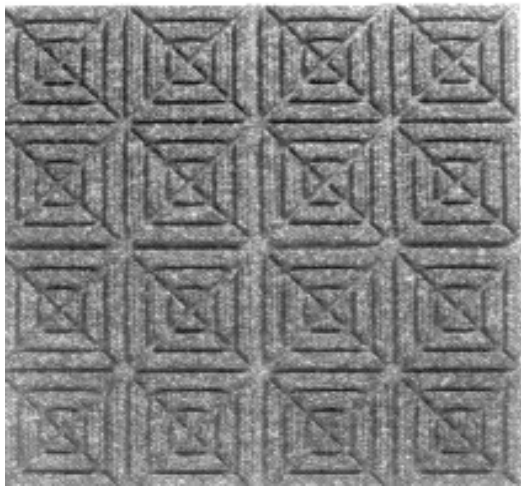
CUSTOMER P.O. #

WILLIAMSBURG® 1/4" & 7/16" Tiles (WH-1482)

ALL SIZES SHOWN ARE INSIDE FRAME DIMENSIONS



A x B
Type of Frame:
Style of Frame:
Type of Mat:
Color of Mat:



SPECIFICATIONS

FACE: Molded reinforced needle punch
 YARN: 100% solution dyed low static polypropylene
 PILE HEIGHT: 1/4" & 7/16"
 FACE WEIGHT: 24 ounces per square yard
 TOTAL WEIGHT: 135 oz./Sq. yd. (1/4")
 240 oz./Sq. yd. (7/16")
 SQ. YARD/CASE: 1/4" = 3 or 7/16" = 2.5
 TILE DIMENSIONS: 18" x 18"
 TILES PER CASE: 1/4" = 12 or 7/16" = 10

Not recommended for use in areas exposed to grease or petroleum products.

FLAMMABILITY: Passes pill test DOC-FF-1-70

Flux per ASTM E-648 greater than 0.45 watts/cm²

STATIC: Electrical resistance, IBM method. Average megohms 40.6

Electrical resistance, Burroughs method. Average megohms 73.6

AATCC134: KVStep 0.6 and KVScuff 1.6

DIMENSIONAL STABILITY AACHENER TEST: Less than 0.2% change

HOG ADHESIVE (AD-1382)

JOB NAME:	ITEMS	SELECTION QUANTITY
JOB NUMBER:		
CONTRACTOR:		
ARCHITECT:		
DEALER NAME:		
APPROVAL SIGNATURE: _____ Date: _____	DRAWN BY: _____	